



**Mayor's Comprehensive Plan Update Proposal  
9/29/2020 Ward3Vision Virtual Forum**

# [PLAN]DC

THE DC OFFICE OF PLANNING

## Context Elements



Framework



Introduction



Implementation

## Citywide Elements



Land Use



Economic  
Development



Housing



Arts &  
Culture



Environmental  
Protection



Transportation



Community  
Services &  
Facilities



Education  
Facilities



Urban Design



Historic  
Preservation



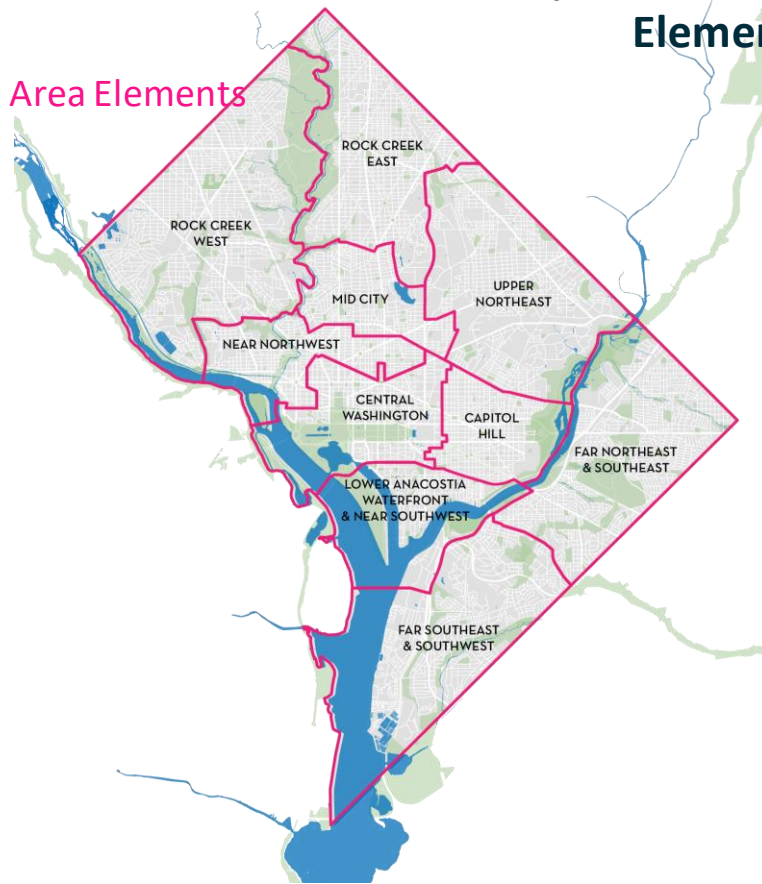
Infrastructure

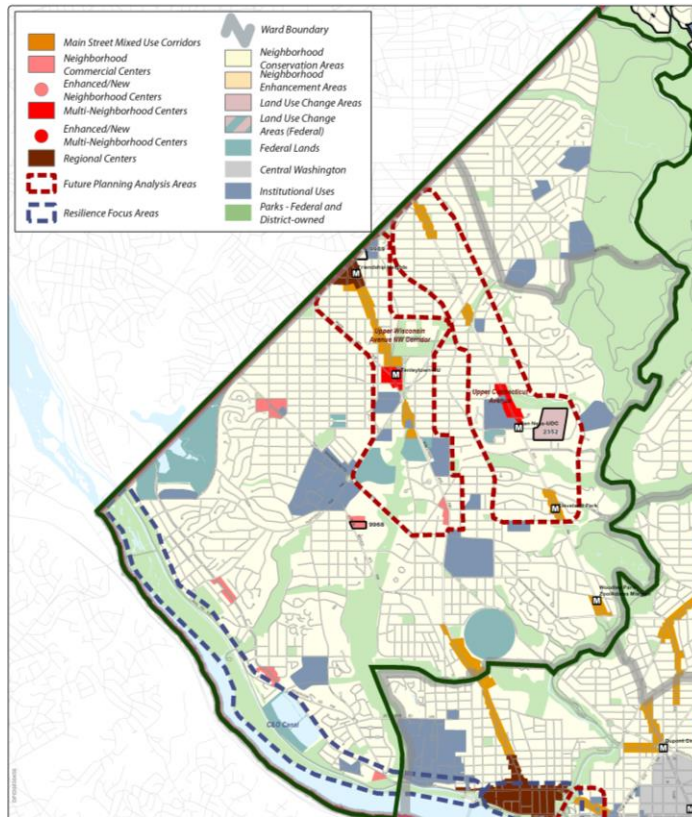
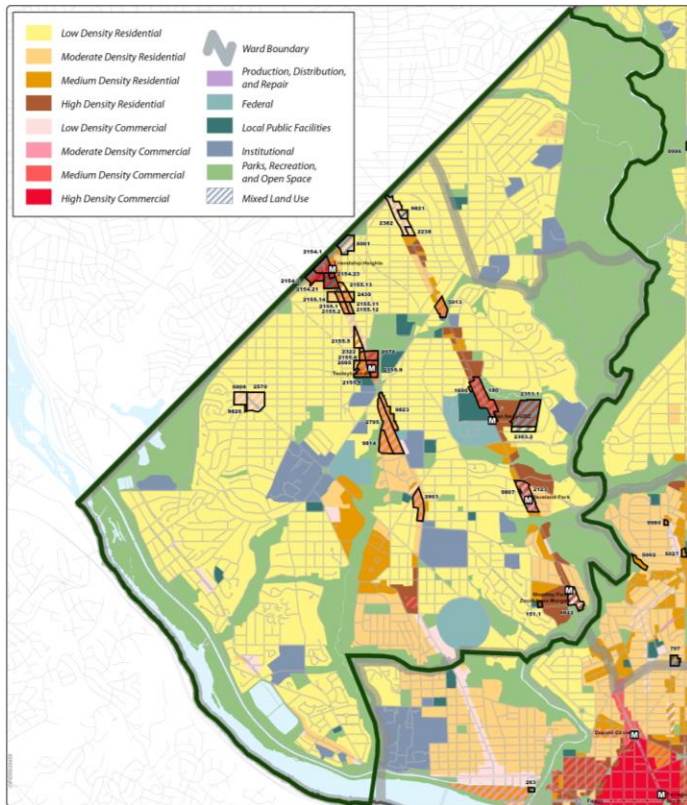


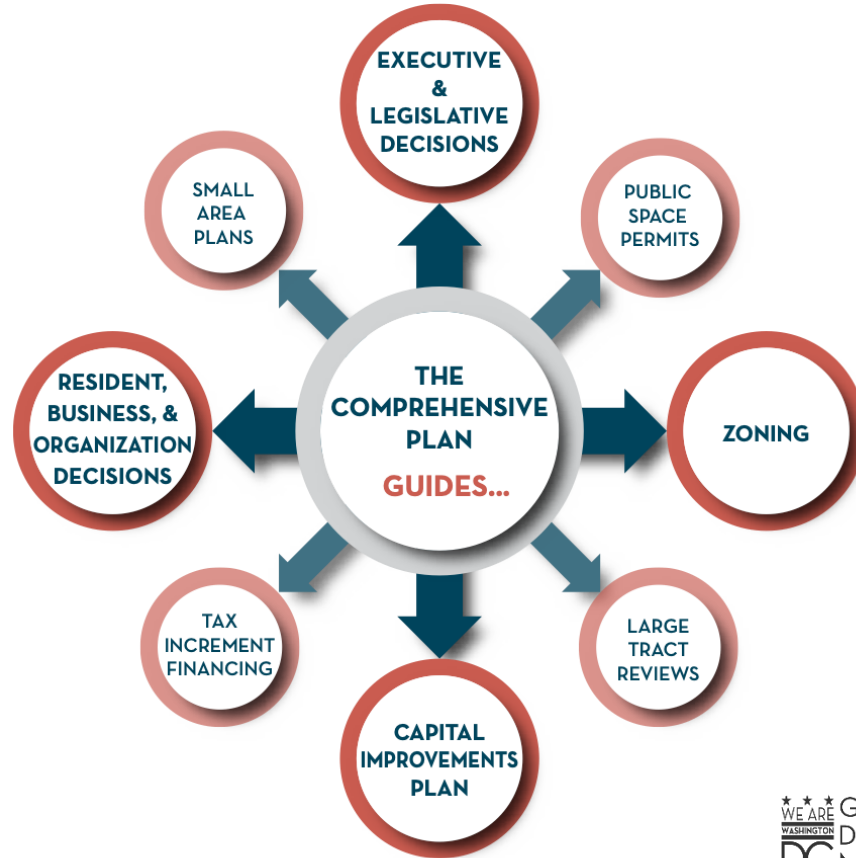
Parks,  
Recreation &  
Open Space

## Comprehensive Plan Elements

### Area Elements

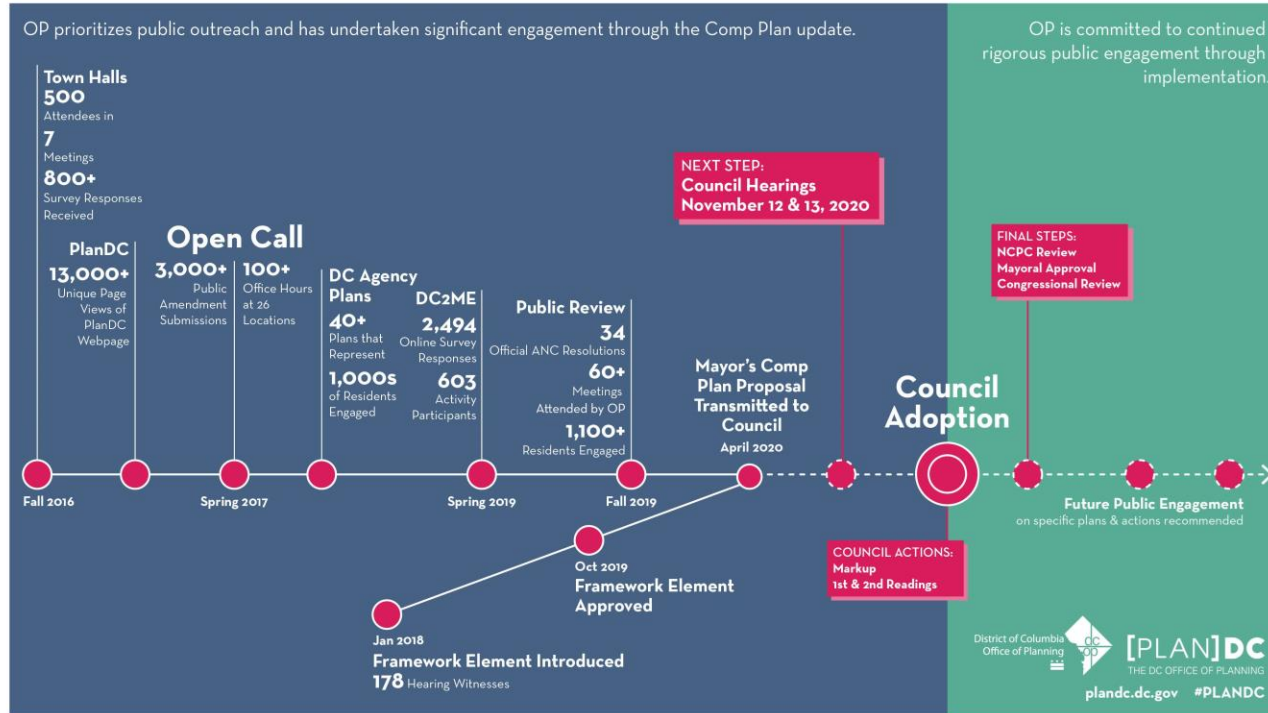






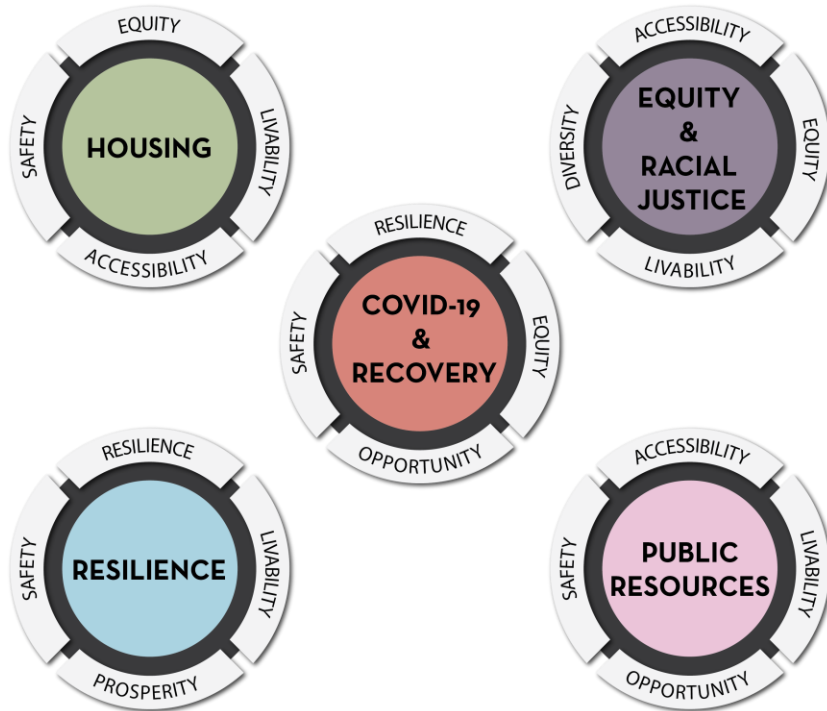
# Comprehensive Plan Process & Timeline

## COMP PLAN UPDATE PUBLIC INPUT



As of 9/15/2020

## Comprehensive Plan Major Themes and Updates

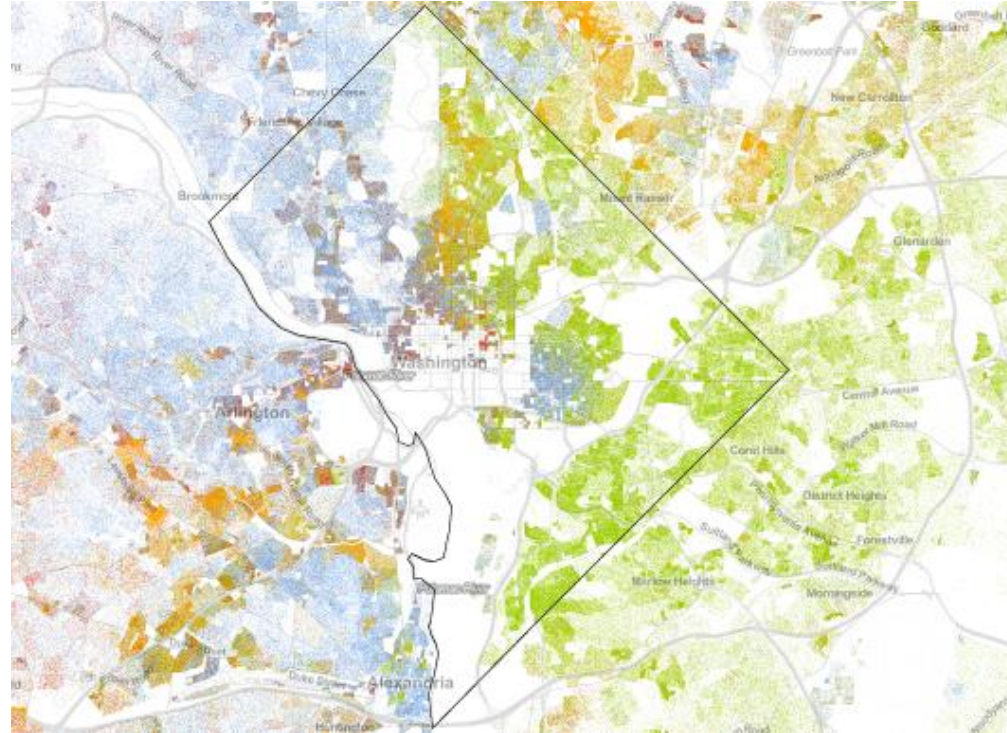


- Incorporated 40+ plans;
- Reduced contradictory language and increased prioritization;
- Updated data, information, and terminology; and
- Expanded language around resilience, response and recovery, and public health emergencies, as well as modifying language related to the economy.

- Framework Element defines vision for equity
- Equity-driven Goals in Citywide Elements
- [Equity Crosswalk](#)

*Equity exists where all people share equal rights, access, choice, opportunities and outcomes, regardless of characteristics such as race, class, or gender.*





Source: Weldon Cooper Center for Public Service

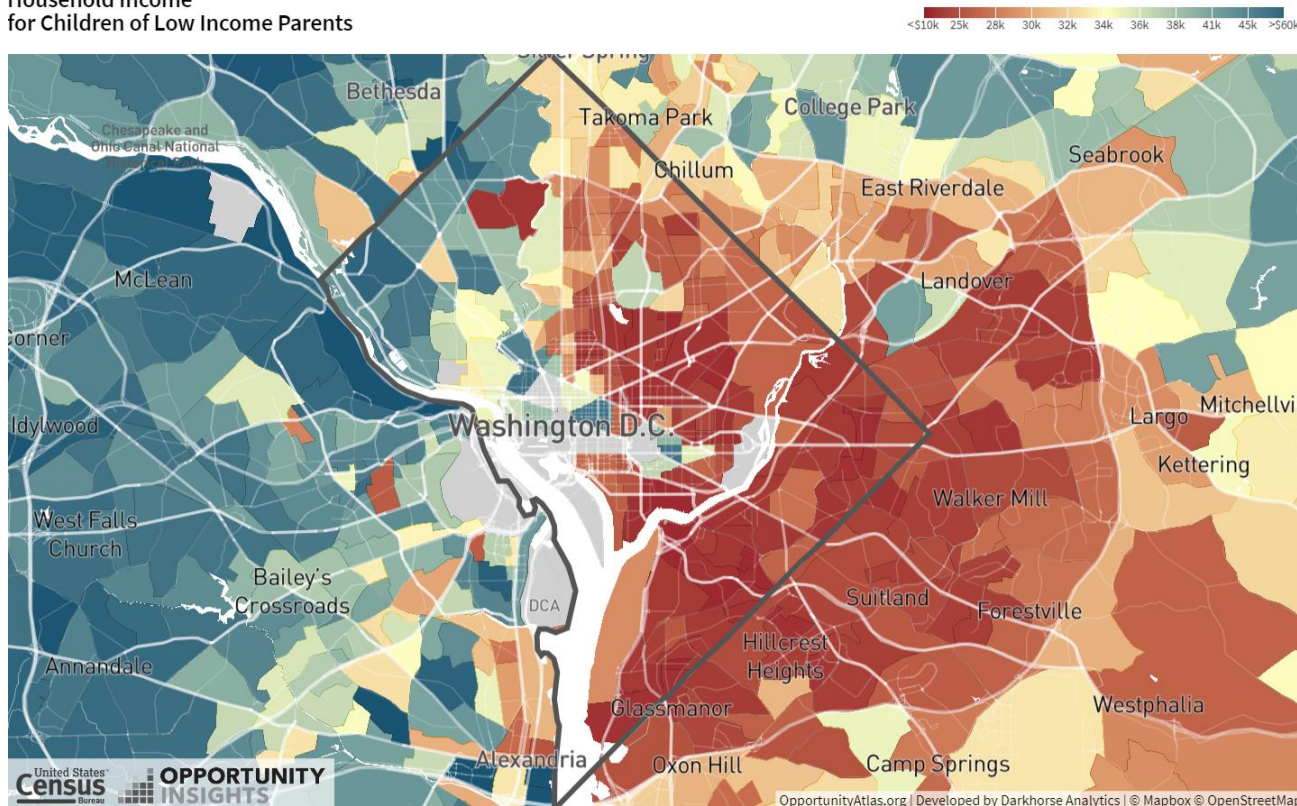


# [PLAN]DC

THE DC OFFICE OF PLANNING

Household Income  
for Children of Low Income Parents

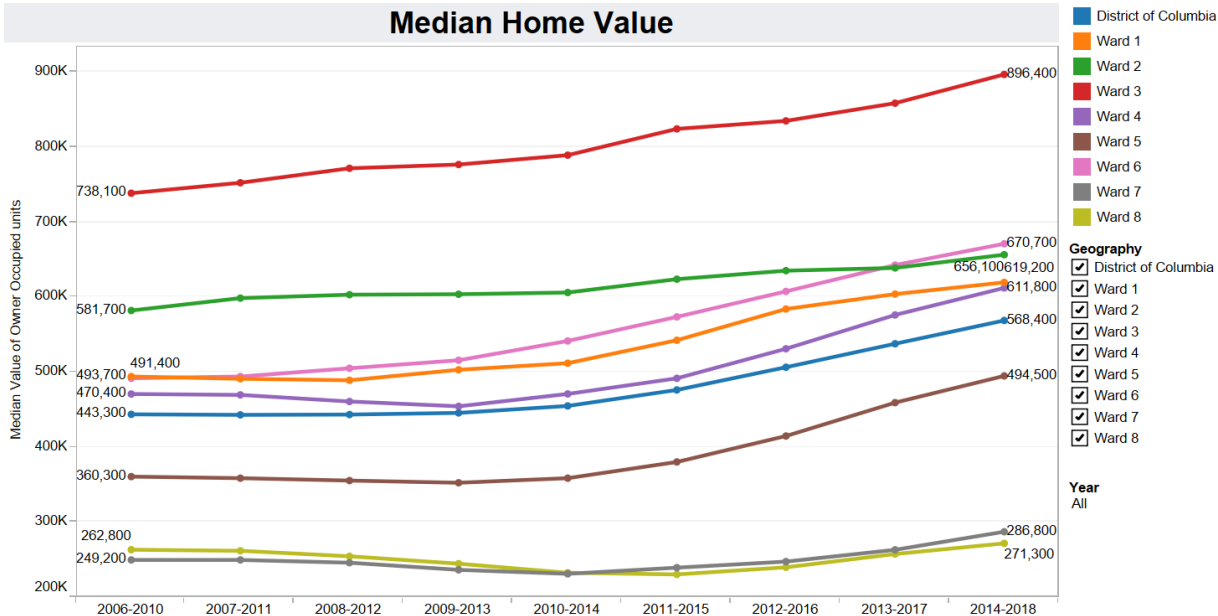
## Comprehensive Plan Patterns of Opportunity



United States  
Census Bureau  
OPPORTUNITY  
INSIGHTS

OpportunityAtlas.org | Developed by Darkhorse Analytics | © Mapbox © OpenStreetMap

# Comprehensive Plan Socioeconomic Indicators



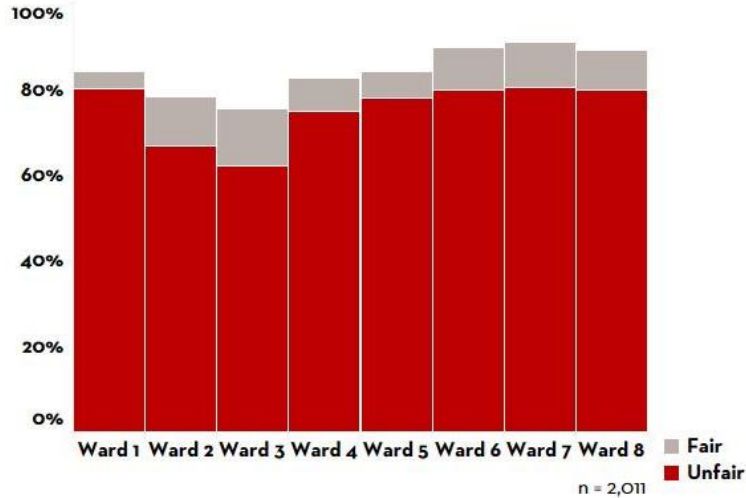
**Median Household Income (2018):**

- Citywide: \$82,604
- Ward 3: \$ 126,184

Source: U.S. Census Bureau, American Community Survey (ACS) 5-Year Estimates

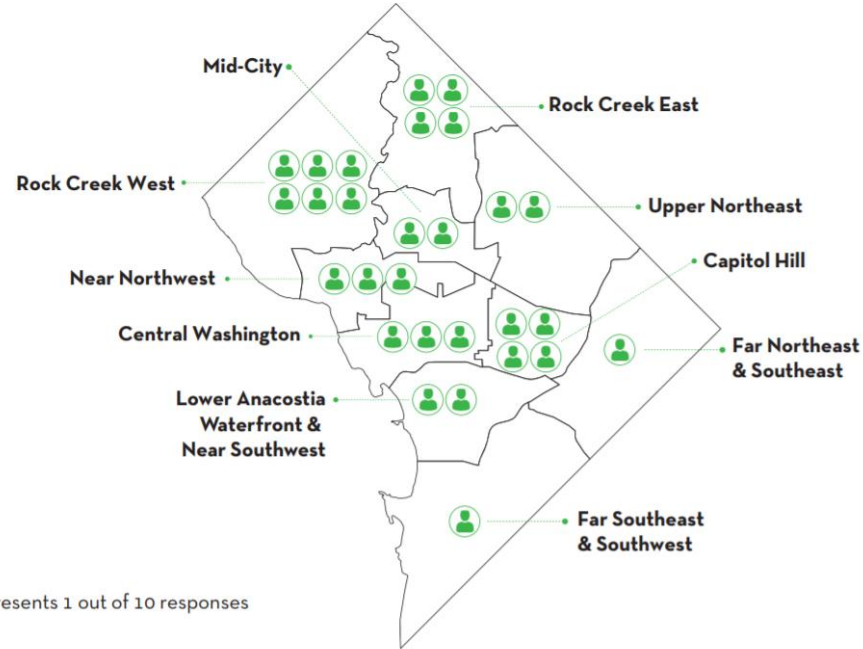
Source: U.S. Census Bureau, American Community Survey (ACS) 5-Year Estimates

How residents perceive the current distribution of affordable housing.



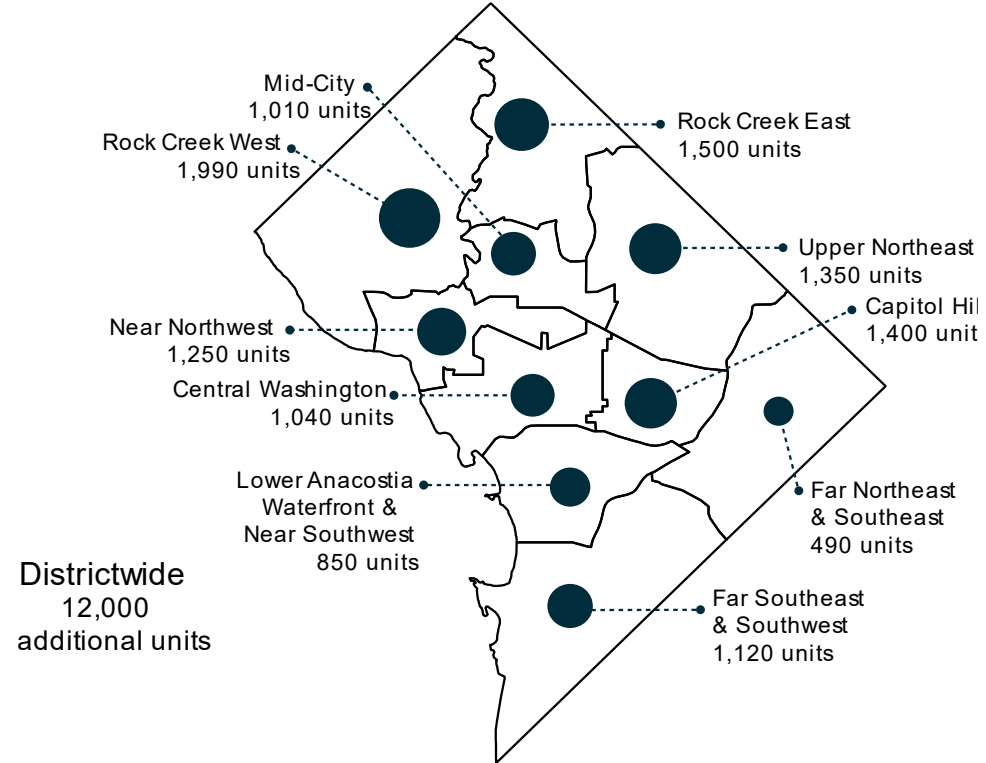
## Comprehensive Plan Equitable Housing Distribution

Where residents think affordable housing should be prioritized.



**2025 Dedicated Affordable Housing Production Goals**

- Achieve a minimum of 15% affordable units within each Planning Area by 2050
- Ensure one-third of new housing built over the next 20 years is affordable at 80% or less of MFI
- Encourage the development of affordable housing in high-cost areas
- Preserve existing subsidized and naturally occurring affordable housing
- Minimize displacement from redevelopment or conversions of affordable housing



**Key policy areas:**

- Expanding the supply of housing
- Supporting and inclusive city and fair housing
- Leveraging inclusionary zoning
- Preserving and redeveloping affordable housing
- Addressing the need for large, family-sized units



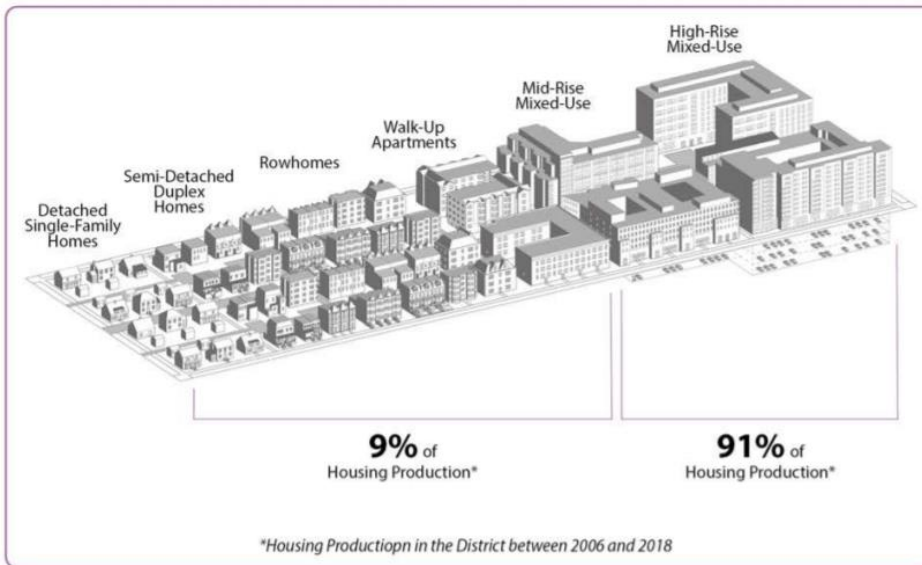
### Citywide policies to support housing

**Policy LU-2.1.1** encourages redevelopment and/or adaptive reuse to advance affordability.

**Policy H-1.1.8** supports affordable & market rate housing development in high-cost areas.

**Policy H-2.1.3** maintains programs to minimize displacement.

**Policy H-1.3.1** encourages new and retained single-family homes, duplexes, row houses, and three and four-bedroom units to provide larger units for a range of household incomes.



**Policy RCW-1.1.4** supports infill development featuring design transitions between large- and small-scale development

**Policy RCW-1.1.7** encourages senior and disabled housing along Wisconsin & Connecticut Avenues.

**Policies RCW-2.1.2** and supports new affordable housing along Connecticut and Wisconsin Avenues and near the Friendship Heights Metro.

**Action RCW-2.2.C** supports a plan to inform future development and manage growth on Wisconsin Avenue between the Tenleytown and Friendship Heights Metro stations.







## Comprehensive Plan Next steps

- **#CompPlan2020:** Talk to the Council about the importance of approving the Comp Plan to support needed economic recovery, housing equity, small area planning, and important development projects.
- **Participate in Council's review:** Visit the [Committee of the Whole's Comp Plan website](#) to submit comments by writing or phone or sign up to testify on Nov. 12 or 13.
- **Find out more about this Comp Plan Proposal:** Visit [PlanDC website](#) to access updated info and resources and to connect with the team and join the email list.



# Comprehensive Plan Reference Links

[Project Website](#)

[Staff Report](#)

[Maps](#)

[Major Themes](#)

[Single Family Housing Report](#)

Project Team –  
plandc@dc.gov

Amending the DC Comprehensive Plan

Home Documents by Theme Past Outreach

Search Submit

Comp Plan at Council

- [Comp Plan Legislation](#) <sup>#</sup>
- [Committee of the Whole Comp Plan Page](#) <sup>#</sup>
- [Comp Plan Correspondence](#)

About the Comp Plan

- [Comp Plan Overview](#)
- [Comp Plan FAQ](#)
- [Comp Plan Video](#)
- [Comp Plan Status](#)
- [Major Themes](#)

Mayor's Comprehensive Plan Update Proposal

- [Staff Report](#)
- [Full Element Chapters](#)
- [Maps](#)
- [Single Family Housing Report](#)
- [Public Review Feedback](#)
- [ANC Resolutions](#)

Stay Engaged

To receive Comp Plan email updates or update your email preferences:

Email Address

Submit

Framework Element

[Framework Element](#) <sup>#</sup>